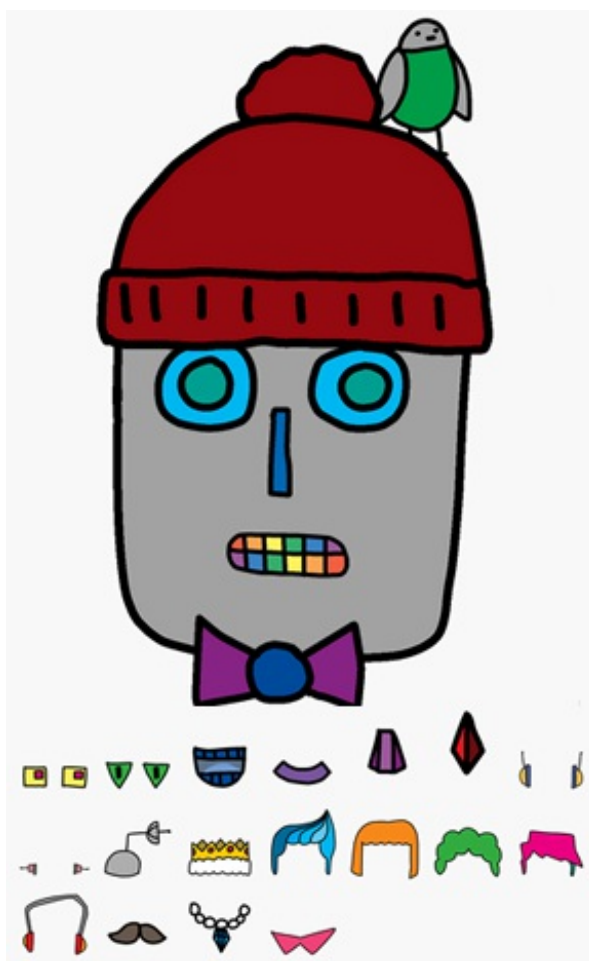


Introduction

In this project, you'll learn how to position images to create your own robot!



Step 1: Giving your robot eyes

Let's give your robot some eyes!

✔ Activity Checklist

- Open this trinket: jumpto.cc/web-robot.

The project should look like this:

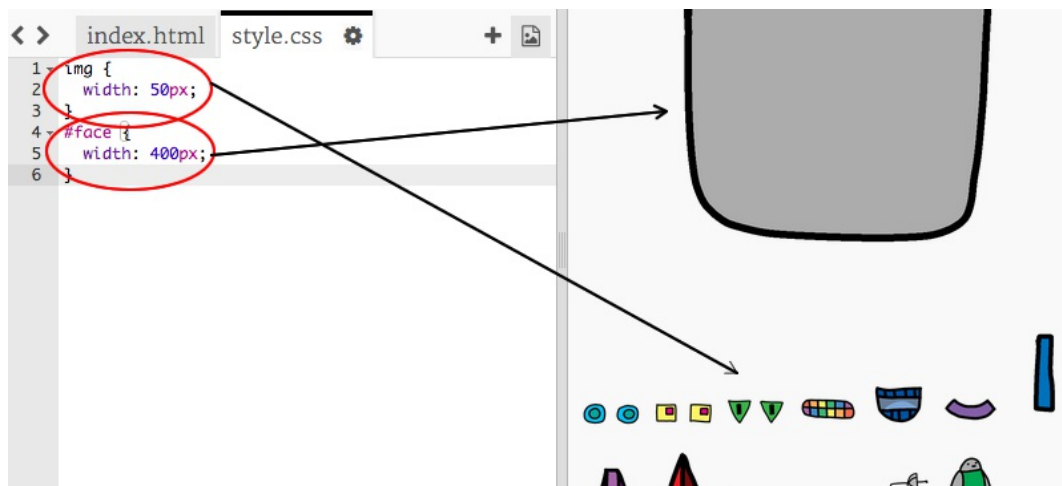


- Each image in this project has its own name (or **id**). For example, the HTML for the face and eye images ('face', 'eyes1' and 'eyes2' starting on line 8 of your code) looks like this:

```
<img id="face" ...>
<img id="eyes1" ...>
<img id="eyes2" ...>
```

- You can use an image's id to give it its own style, by using the **#** symbol. This allows you to style each image separately.

Click on the `style.css` file. Notice how the size of the robot's face and the other images are different?

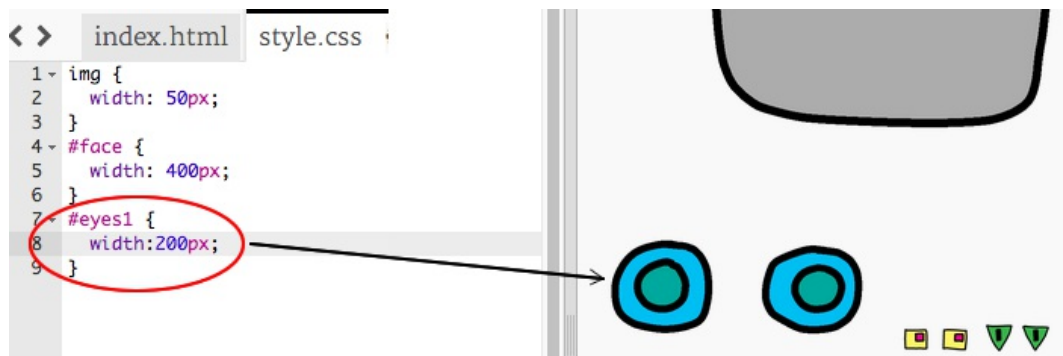


- Add this CSS code to style the robot's eyes:

```
#eyes1 {
  width: 200px;
}
```

Notice that you're styling just the `eyes1` image, by using `#eyes1` in your CSS. If

you prefer, you can use `#eyes2` or `#eyes3` instead!

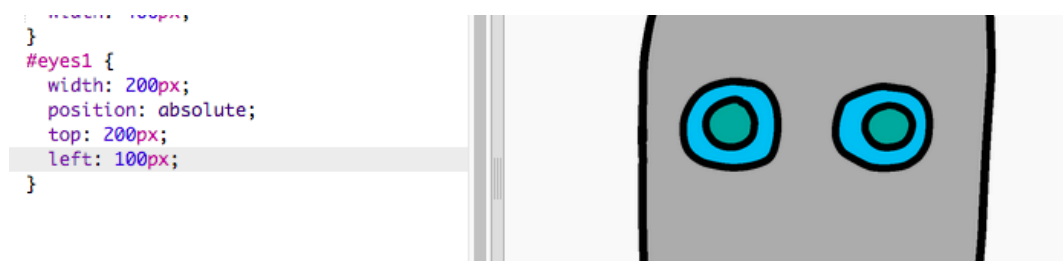


- Notice how each image is displayed one after the other? This is called **relative** positioning. If you want to tell the browser exactly where to place your robot's eyes, you'll need to use **absolute** positioning instead.

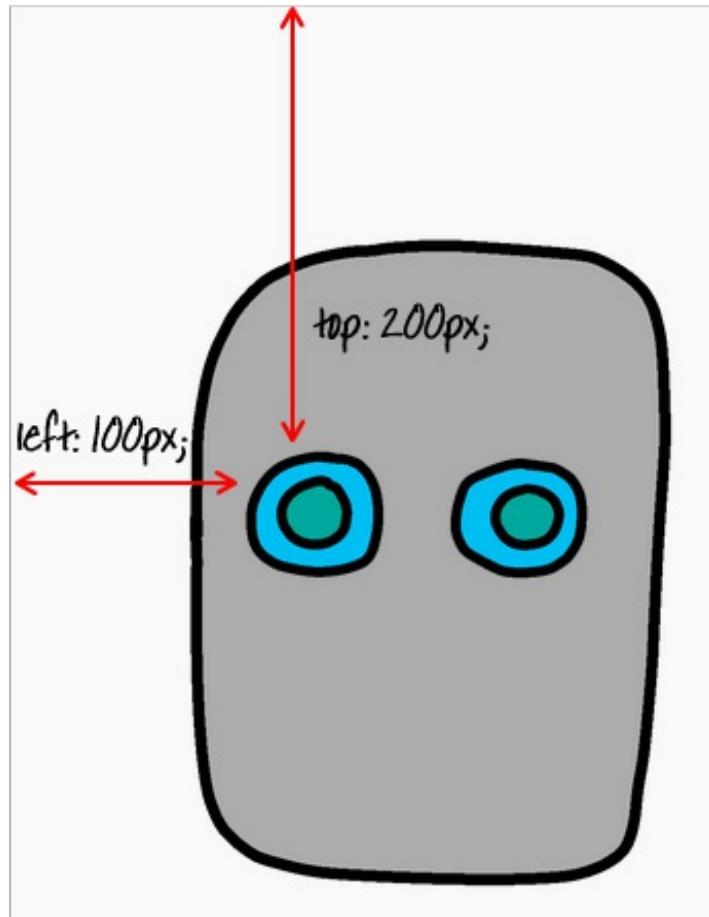
Add these 3 lines of code to the CSS for your `eyes1` image:

```
position: absolute;
top: 200px;
left: 100px;
```

You should see that your robot's eyes move to the correct place on your robot.



This CSS code tells the browser how far from the top / left of the webpage to display the image.



You can use `bottom` instead of `top` to tell the browser how far from the bottom of the screen to show the image, as well as using `right` instead of `left`.

Step 2: Giving your robot a mouth

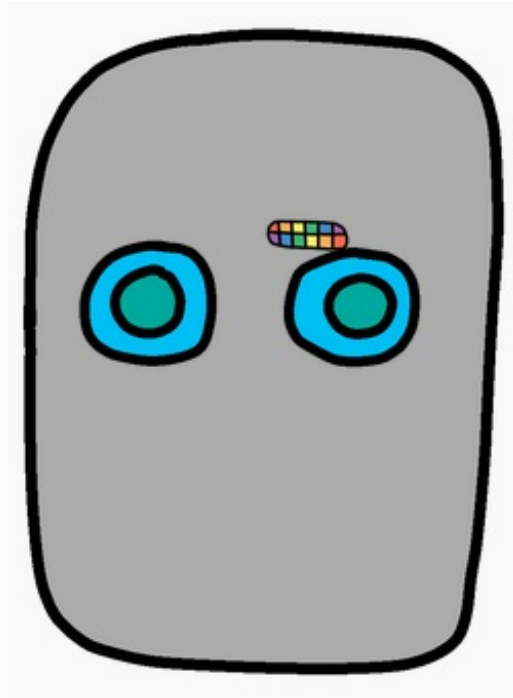
Let's give your robot a mouth!

✔ Activity Checklist

- Add the following CSS code to style your `mouth1` image:

```
#mouth1 {  
  width: 50px;  
  position: absolute;  
  top: 200px;  
  left: 200px;  
}
```

- Your robot's mouth looks quite small, and isn't in the right place.



Can you fix this, by making changes to your CSS?

Save Your Project

Challenge: Design your own robot

Use what you've learnt to finish designing your own robot.
Here are some examples of how your robot might look:



Save Your Project

Challenge: Add your own images

Can you find extra images to add to your robot, and position them on your webpage? You could even replace the robot face with your own!

```

```

Save Your Project

